

Sela.

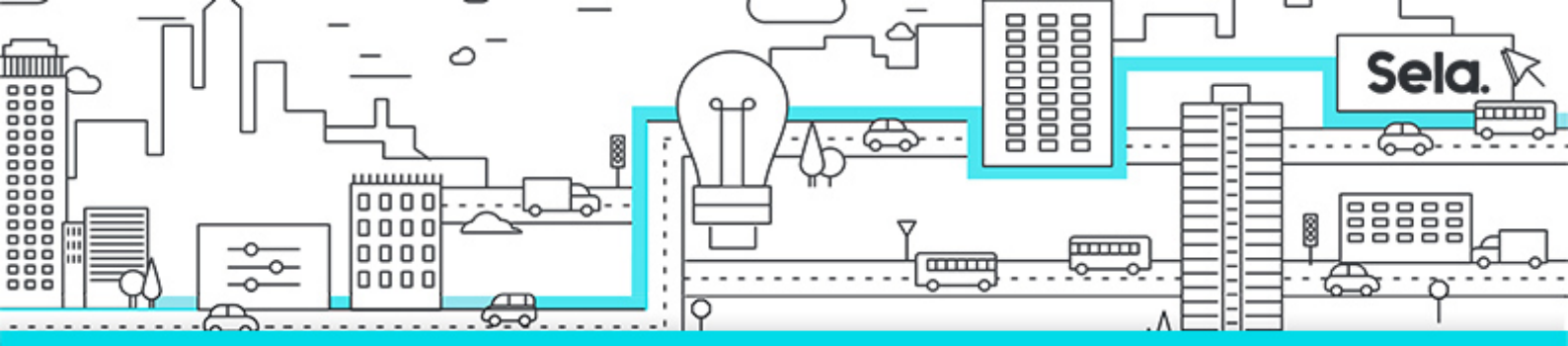
20778C

Analyzing Data with Power BI

college@sela.co.il

03-6176666





Analyzing Data with Power BI

20778C - Version: 1

3 days course

Description:

This three-day instructor-led course provides students with the knowledge and skills to analyze data with Power BI.

Intended Audience:

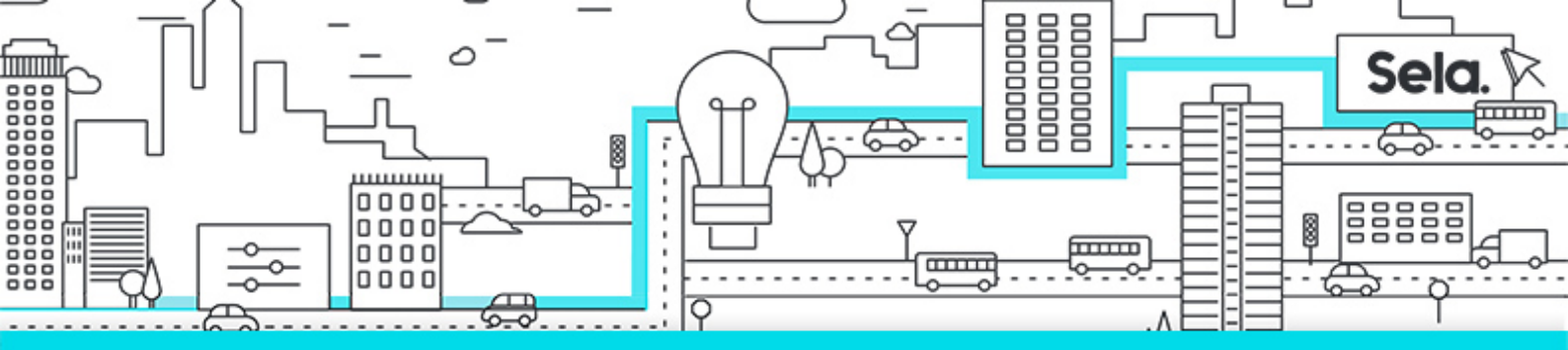
The primary audience for this course is BI professionals who need to analyze data utilizing Power BI. The secondary audiences for this course are technically proficient business users.

Prerequisites:

- Basic knowledge of the Microsoft Windows operating system and its core functionality.
- Basic knowledge of data warehouse schema topology (including star and snowflake schemas).
- Some exposure to basic programming concepts (such as looping and branching).
- An awareness of key business priorities such as revenue, profitability, and financial accounting is desirable.
- Familiarity with Microsoft Office applications – particularly Excel.

Objectives:

- Describe self-service BI.
- Describe the Power BI suite of products.
- Connect to data sources and optimize data models.
- Shape and combine data from different sources.



- Model data.
- Create reports and manage solutions.
- Describe the Power BI developer API.
- Describe the Power BI mobile app.

Topics:

• **Module 1: Introduction to Self-Service BI Solutions**

- Introduction to Business Intelligence
- Introduction to Data Analysis
- Introduction to Data Visualization
- Overview of Self-Service BI
- Considerations for Self-Service BI
- Microsoft Tools for Self-Service BI
- Lab : Exploring an Enterprise BI Solution

• **Module 2: Introducing Power BI**

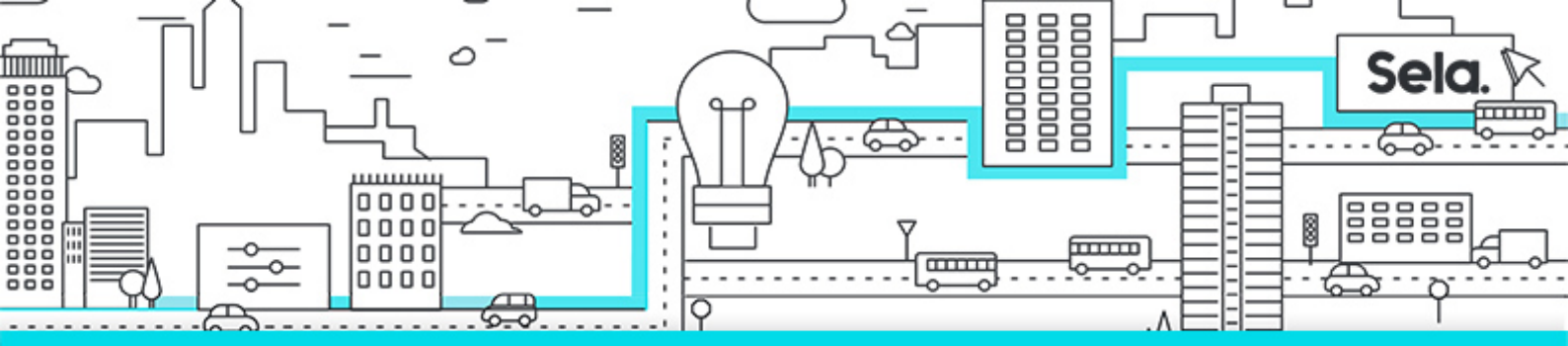
- Power BI
- The Power BI Service
- Lab : Creating a Power BI Dashboard

• **Module 3: Power BI Data**

- Using Excel as a Data Source for Power BI
- The Power BI Data Model
- Using Databases as a Data Source for Power BI
- The Power BI Service
- Lab : Importing Data into Power BI

• **Module 4: Shaping and Combining Data**

- Power BI Desktop Queries
- Shaping Data
- Combining Data



- Lab : Shaping and Combining Data

- **Module 5: Modeling Data**

- Relationships
- DAX Queries
- Calculations and Measures
- Lab : Modeling Data

- **Module 6: Interactive Data Visualizations**

- Creating Power BI Reports
- Managing a Power BI Solution
- Lab : Creating a Power BI Report

- **Module 7: Direct Connectivity**

- Cloud Data
- Connecting to Analysis Services
- Lab : Direct Connectivity

- **Module 8: The Developer API**

- The Developer API
- Custom Visuals
- Lab : Using the Developer API

- **Module 9: Power BI Mobile**

- Power BI Mobile Apps
- Using the Power BI Mobile App
- Power BI Embedded