

Sela.



AI900

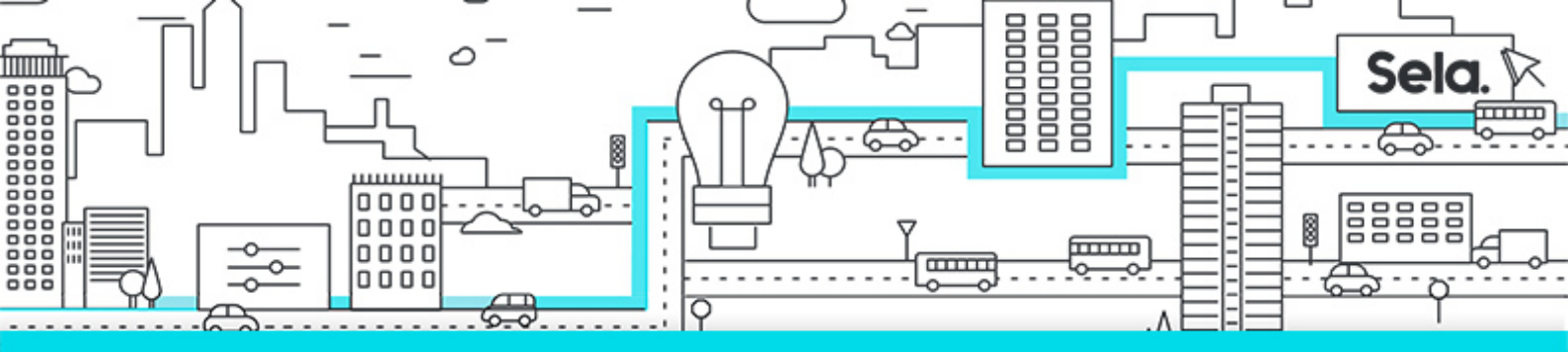
Microsoft Azure AI Fundamentals



college@sela.co.il

03-6176666





Microsoft Azure AI Fundamentals

AI900 - Version: 1

1 day course

Description:

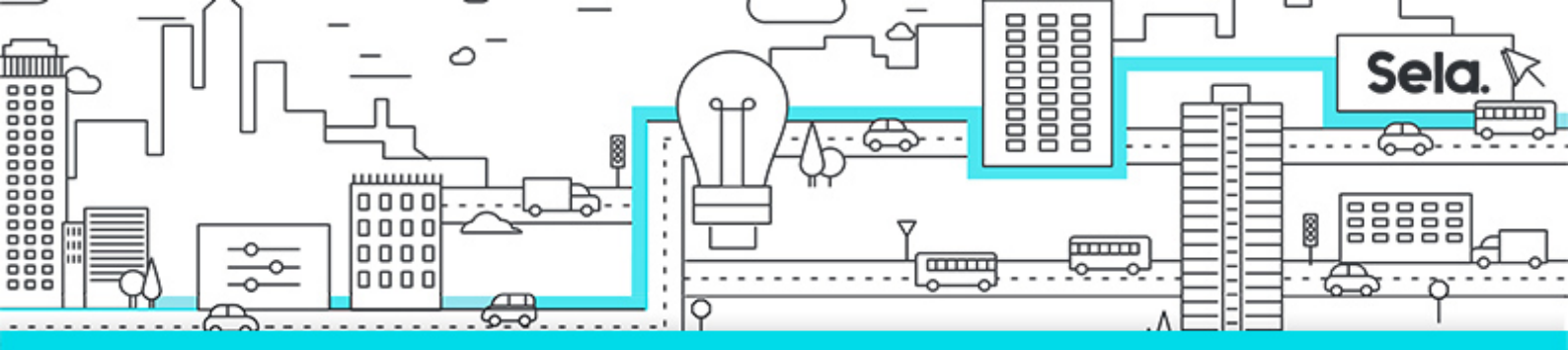
This course introduces fundamental concepts related to artificial intelligence (AI), and the services in Microsoft Azure that can be used to create AI solutions. The course is not designed to teach students to become professional data scientists or software developers, but rather to build awareness of common AI workloads and the ability to identify Azure services to support them. The course is designed as a blended learning experience that combines instructor-led training with online materials on the Microsoft Learn platform. The hands-on exercises in the course are based on Learn modules, and students are encouraged to use the content on Learn as reference materials to reinforce what they learn in the class and to explore topics in more depth.

Intended Audience:

The Azure AI Fundamentals course is designed for anyone interested in learning about the types of solution artificial intelligence (AI) makes possible, and the services on Microsoft Azure that you can use to create them. You don't need to have any experience of using Microsoft Azure before taking this course, but a basic level of familiarity with computer technology and the Internet is assumed. Some of the concepts covered in the course require a basic understanding of mathematics, such as the ability to interpret charts. The course includes hands-on activities that involve working with data and running code, so a knowledge of fundamental programming principles will be helpful.

Prerequisites:

- Experience using computers and the internet.
- Interest in use cases for AI applications and machine learning models.



- A willingness to learn through hands-on exploration.

Objectives:

- Describe Artificial Intelligence workloads and considerations
- Describe fundamental principles of machine learning on Azure
- Describe features of computer vision workloads on Azure
- Describe features of Natural Language Processing (NLP) workloads on Azure
- Describe features of conversational AI workloads on Azure

Topics:

- **Module 1: Introduction to AI**
 - Artificial Intelligence in Azure
 - Responsible AI
- **Module 2: Machine Learning**
 - Introduction to Machine Learning
 - Azure Machine Learning
- **Module 3: Computer Vision**
 - Computer Vision Concepts
 - Computer Vision in Azure
- **Module 4: Natural Language Processing**
- **Module 5: Conversational AI**
 - Conversational AI Concepts
 - Conversational AI in Azure