

Sela.



AZ104

Microsoft Azure Administrator



college@sela.co.il

03-6176666





Microsoft Azure Administrator

AZ104 - Version: 1

4 days course

Description:

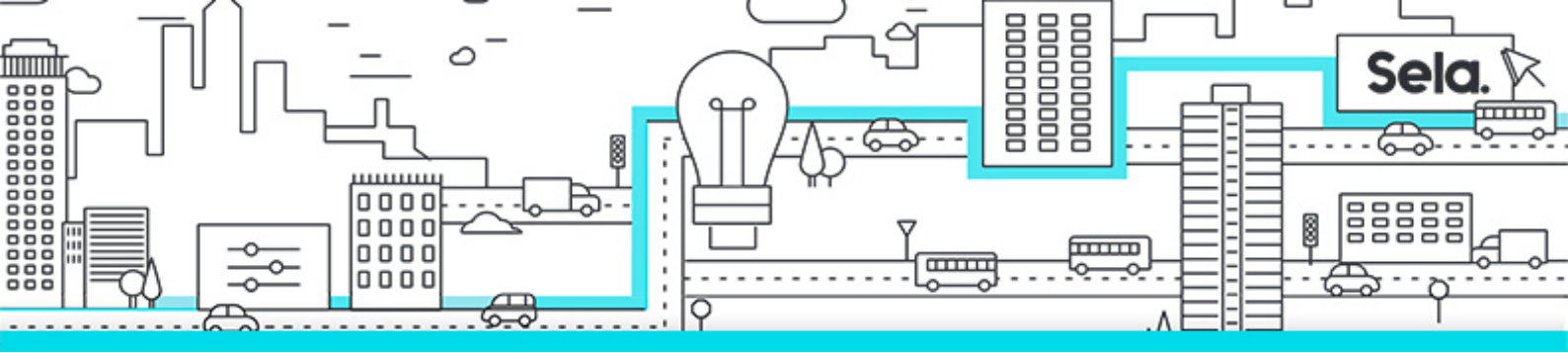
This course teaches IT Professionals how to manage their Azure subscriptions, secure identities, administer the infrastructure, configure virtual networking, connect Azure and on-premises sites, manage network traffic, implement storage solutions, create and scale virtual machines, implement web apps and containers, back up and share data, and monitor your solution.

Intended Audience:

This course is for Azure Administrators. The Azure Administrator implements, manages, and monitors identity, governance, storage, compute, and virtual networks in a cloud environment. The Azure Administrator will provision, size, monitor, and adjust resources as appropriate.

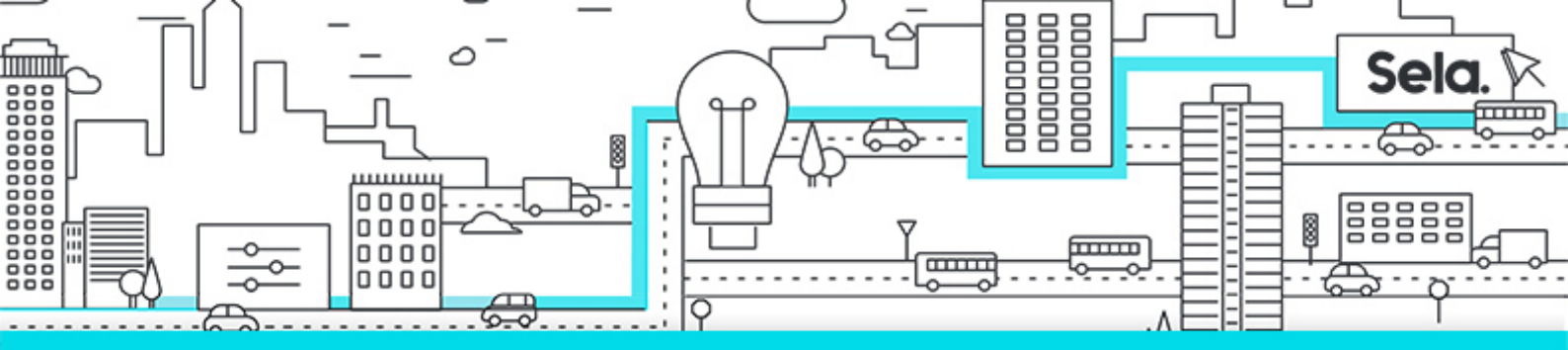
Prerequisites:

- Understanding of on-premises virtualization technologies, including: VMs, virtual networking, and virtual hard disks.
- Understanding of network configuration, including TCP/IP, Domain Name System (DNS), virtual private networks (VPNs), firewalls, and encryption technologies.
- Understanding of Active Directory concepts, including domains, forests, domain controllers, replication, Kerberos protocol, and Lightweight Directory Access Protocol (LDAP).
- Understanding of resilience and disaster recovery, including backup and restore operations.



Objectives:

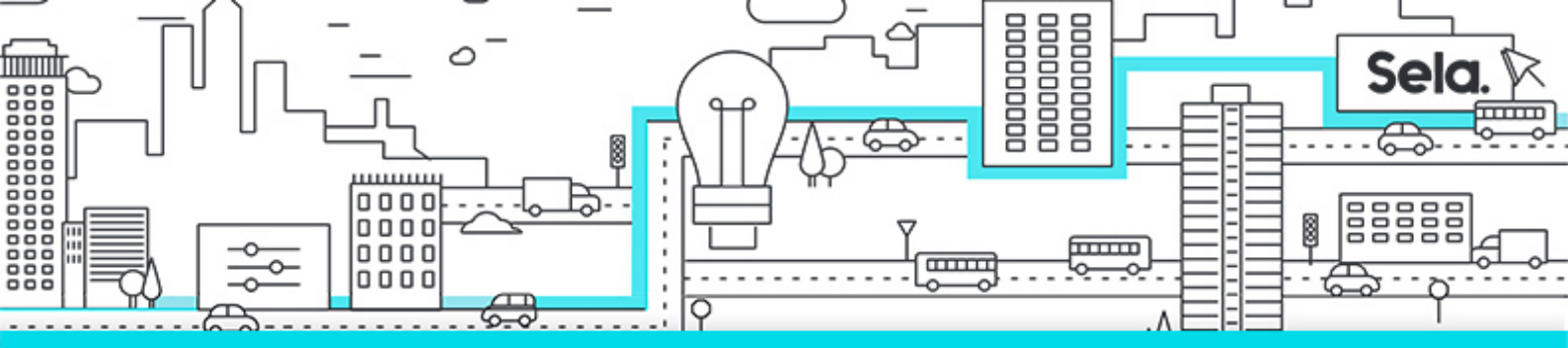
- Secure and manage identities with Azure Active Directory.
- Implement and manage users and groups.
- Implement and manage Azure subscriptions and accounts.
- Implement Azure Policy, including custom policies.
- Use RBAC to assign permissions.
- Leverage Azure Resource Manager to organize resources.
- Use the Azure Portal and Cloud Shell.
- Use Azure PowerShell and CLI.
- Use ARM Templates to deploy resources.
- Implement virtual networks and subnets.
- Configure public and private IP addressing.
- Configure network security groups.
- Configure Azure Firewall.
- Configure private and public DNS zones.
- Configure VNet Peering.
- Configure VPN gateways.
- Choose the appropriate intersite connectivity solution.
- Configure network routing including custom routes and service endpoints.
- Configure an Azure Load Balancer.
- Configure and Azure Application Gateway.
- Choose the appropriate network traffic solution.
- Create Azure storage accounts.
- Configure blob containers.
- Secure Azure storage.
- Configure Azure files shares and file sync.
- Manage storage with tools such as Storage Explorer.
- Plan for virtual machine implementations.
- Create virtual machines.
- Configure virtual machine availability, including scale sets.
- Use virtual machine extensions.
- Create an app service plan.



- Create a web app.
- Implement Azure Container Instances.
- Implement Azure Kubernetes Service.
- Backup and restore file and folders.
- Backup and restore virtual machines.
- Use Azure Monitor.
- Create Azure alerts.
- Query using Log Analytics.
- Use Network Watcher.

Topics:

- **Module 1: Identity**
 - Azure Active Directory
 - Users and Groups
- **Module 2: Governance and Compliance**
 - Subscriptions and Accounts
 - Azure Policy
 - Role-based Access Control (RBAC)
- **Module 3: Azure Administration**
 - Azure Resource Manager
 - Azure Administrator Tools
 - ARM Templates
- **Module 4: Virtual Networking**
 - Virtual Networks
 - IP Addressing
 - Network Security groups
 - Azure Firewall
 - Azure DNS



- **Module 5: Intersite Connectivity**

- VNet Peering
- VPN Gateway Connections
- ExpressRoute and Virtual WAN

- **Module 6: Network Traffic Management**

- Network Routing and Endpoints
- Azure Load Balancer
- Azure Application Gateway

- **Module 7: Azure Storage**

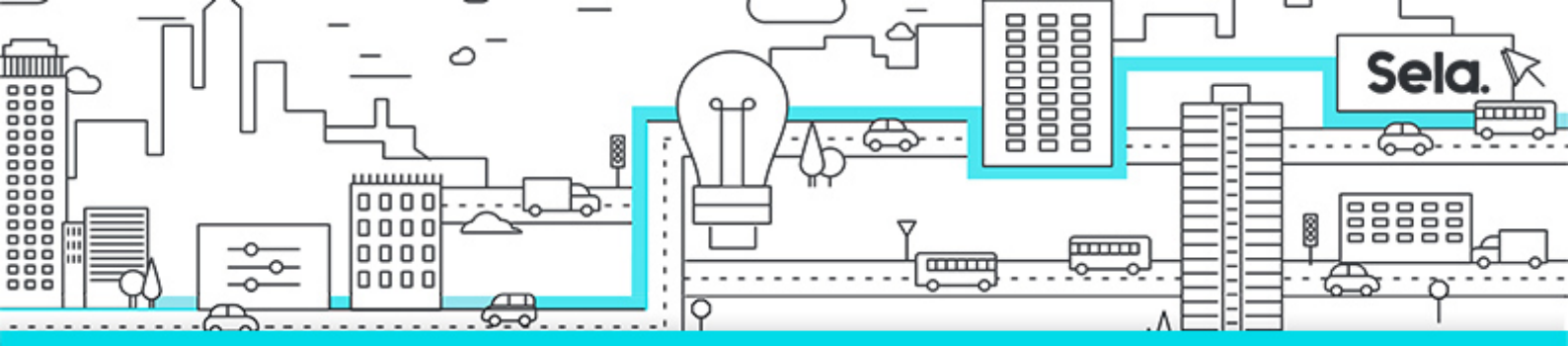
- Storage Accounts
- Blob Storage
- Storage Security
- Azure Files and File Sync
- Managing Storage

- **Module 8: Azure Virtual Machines**

- Virtual Machine Planning
- Creating Virtual Machines
- Virtual Machine Availability
- Virtual Machine Extensions

- **Module 9: Serverless Computing**

- Azure App Service Plans
- Azure App Service
- Container Services
- Azure Kubernetes Service



- **Module 10: Data Protection**

- File and Folder Backups
- Virtual Machine Backups

- **Module 11: Monitoring**

- Azure Monitor
- Azure Alerts
- Log Analytics
- Network Watcher