

Sela.

DP060

Migrate NoSQL workloads to Azure Cosmos DB

college@sela.co.il

03-6176666





Migrate NoSQL workloads to Azure Cosmos DB

DP060 - Version: 1

1 day course

Description:

This course will teach the students what is Cosmos DB and how you can migrate MongoDB and Cassandra workloads to Cosmos DB.

Intended Audience:

The primary audience for this course is database developers who plan to migrate their MongoDB or Cassandra DB workloads to Azure using Cosmos DB.

Prerequisites:

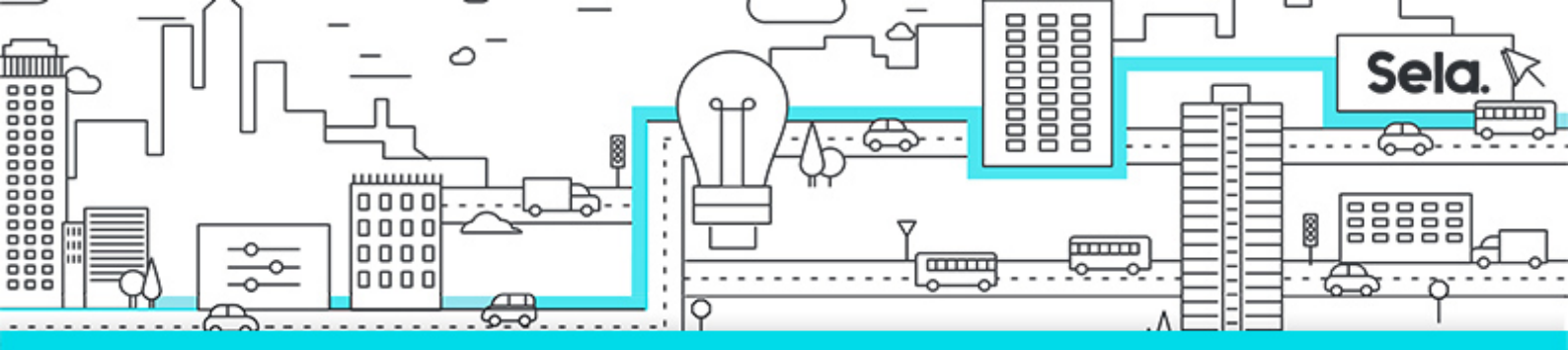
- The fundamental concepts of partitioning, replication, and resource governance for building and configuring scalable NoSQL applications that are agnostic of Cosmos DB API.
- Experience with Azure, such as deploying and managing resources

Objectives:

- Building Globally Distributed Applications with Cosmos DB
- Migrate MongoDB Workloads to Cosmos DB
- Migrate Cassandra DB Workloads to Cosmos DB

Topics:

- **Module 1: Building Globally Distributed Applications with Cosmos DB**
 - Cosmos DB overview
 - Cosmos DB APIs
 - Provisioning Throughput



- Partitioning/Sharding Best Practices

- **Module 2: Migrate MongoDB Workloads to Cosmos DB**

- Understand Migration Benefits
- Migration Planning
- Data Migration
- Application Migration
- Post-migration considerations

- **Module 3: Migrate Cassandra DB Workloads to Cosmos DB**

- Understand Migration Benefits
- Migration Planning
- Data Migration
- Application Migration
- Post-migration considerations