

Sela.



DP900

Microsoft Azure Data Fundamentals



college@sela.co.il

03-6176666





Microsoft Azure Data Fundamentals

DP900 - Version: 1

2 days course

Description:

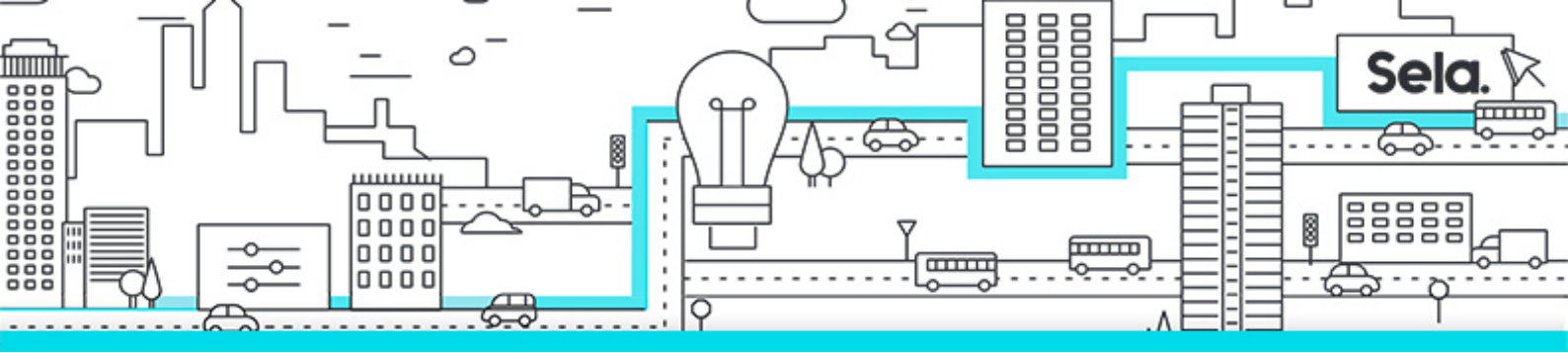
In this course, students will learn the fundamentals of database concepts in a cloud environment, get basic skilling in cloud data services, and build their foundational knowledge of cloud data services within Microsoft Azure. Students will identify and describe core data concepts such as relational, non-relational, big data, and analytics, and explore how this technology is implemented with Microsoft Azure. They will explore the roles, tasks, and responsibilities in the world of data. The students will explore relational data offerings, provisioning and deploying relational databases, and querying relational data through cloud data solutions with Microsoft Azure. They will explore non-relational data offerings, provisioning and deploying non-relational databases, and non-relational data stores with Microsoft Azure. Students will explore the processing options available for building data analytics solutions in Azure. They will explore Azure Synapse Analytics, Azure Databricks, and Azure HDInsight. Students will learn what Power BI is, including its building blocks and how they work together.

Intended Audience:

The audience for this course is individuals who want to learn the fundamentals of database concepts in a cloud environment, get basic skilling in cloud data services, and build their foundational knowledge of cloud data services within Microsoft Azure.

Prerequisites:

- Experience using a web browser, such as Microsoft Edge.
- Familiarity with basic data-related concepts, such as working with tables of



data in a spreadsheet and visualizing data using charts.

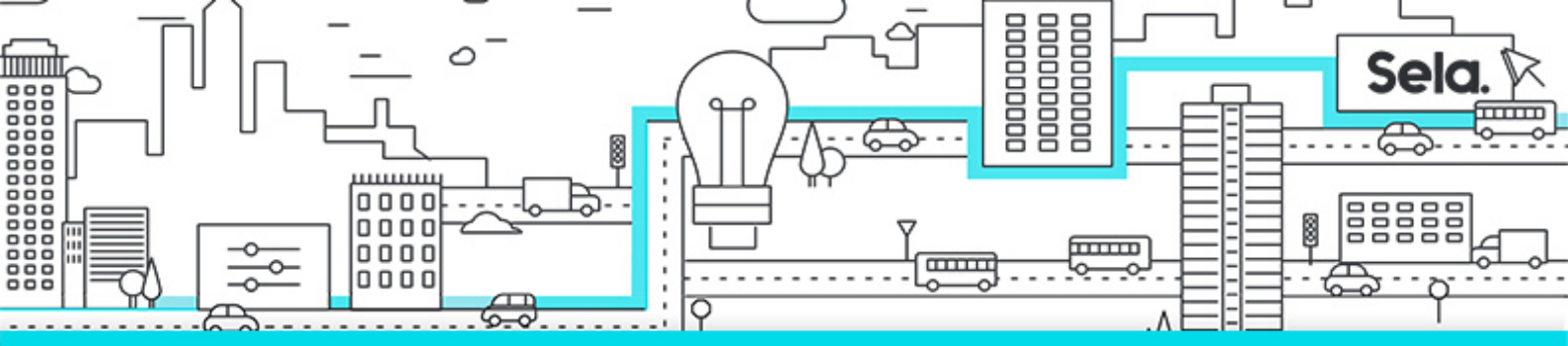
- A willingness to learn through hands-on exploration.

Objectives:

- Describe core data concepts in Azure
- Explain concepts of relational data in Azure
- Explain concepts of non-relational data in Azure
- Identify components of a modern data warehouse in Azure

Topics:

- **Module 1: Explore core data concepts**
 - Explore core data concepts
 - Explore roles and responsibilities in the world of data
 - Describe concepts of relational data
 - Explore concepts of non-relational data
 - Explore concepts of data analytics
- **Module 2: Explore relational data in Azure**
 - Explore relational data services in Azure
 - Explore provisioning and deploying relational database services in Azure
 - Query relational data in Azure
- **Module 3: Explore non-relational data in Azure**
 - Explore non-relational data services in Azure
 - Explore provisioning and deploying non-relational data services on Azure
 - Manage non-relational data stores in Azure
- **Module 4: Explore modern data warehouse analytics in Azure**
 - Examine components of a modern data warehouse
 - Explore data ingestion in Azure
 - Explore data storage and processing in Azure



- Get started building with Power BI