

Sela.



J2EE

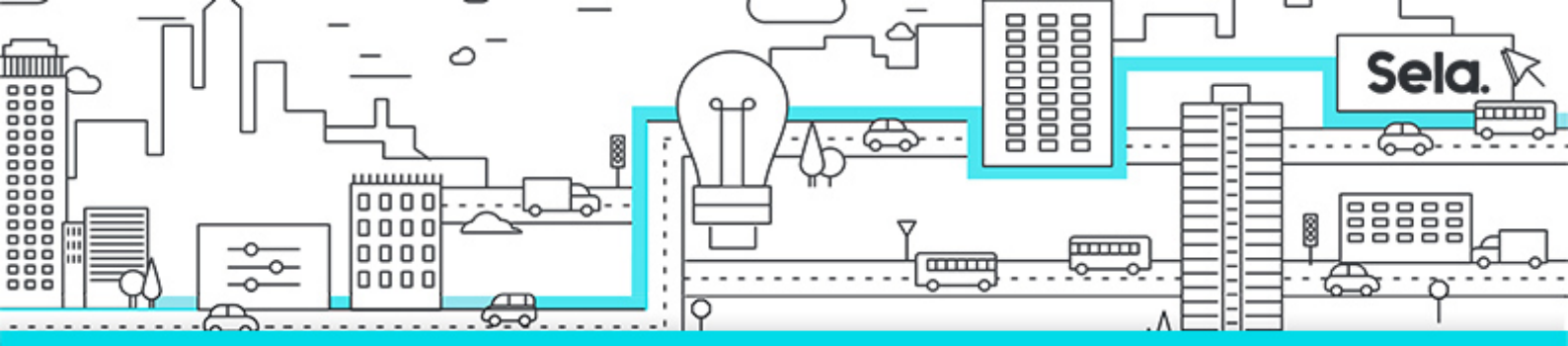
Developing Enterprise Applications with J2EE Enterprise Technologies



college@sela.co.il

03-6176666





Developing Enterprise Applications with J2EE Enterprise Technologies

J2EE - Version: 25

5 days course

Description:

J2EE is a framework that defines the standard for developing multi-tier enterprise applications. It simplifies enterprise applications by basing them on standardized, modular components, and it provides a complete set of services to those components.

The J2EE technologies can be divided into two main groups, Enterprise and Web technologies. The following specifications construct the J2EE enterprise technologies: JDBC, RMI, JNDI, JMS, EJB.

This course addresses the issues involved with developing enterprise applications using the J2EE technologies.

Intended Audience:

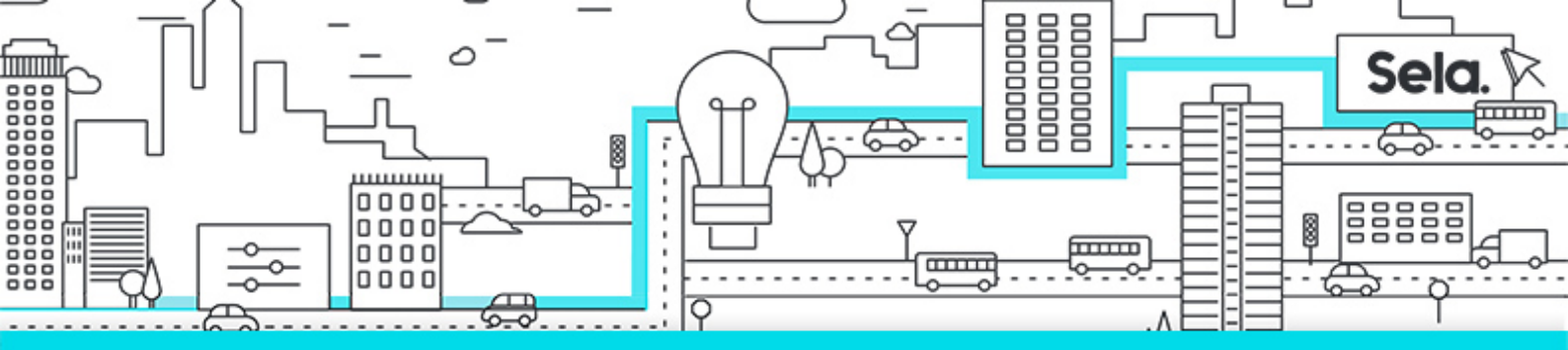
Designers/developers and anyone who wishes to know how to develop java enterprise applications.

Prerequisites:

- Basic knowledge of the Java programming language
- basic knowledge of RMI
- Basic knowledge of JDBC

Objectives:

- Build and deploy applications that use JNDI, JMS, EJB 3.0 and JPA
- Build and deploy applications that use JNDI, JMS, EJB 3.0 and JPA



- Configure and run J2EE application server with the above technologies
- Architect a small system using small combination of the J2EE technologies

Topics:

• **servlet & JSP**

- Servlets Basics
- J2EE Web Applications
- Java Server Pages
- JSP API
- Servlet 3.0 Asynch. Support

• **Introduction to J2EE**

- Tiered model architectures – principles and goals
- J2EE definition and characteristics
- J2EE technologies in a multi-tier architecture

• **Locating objects using JNDI**

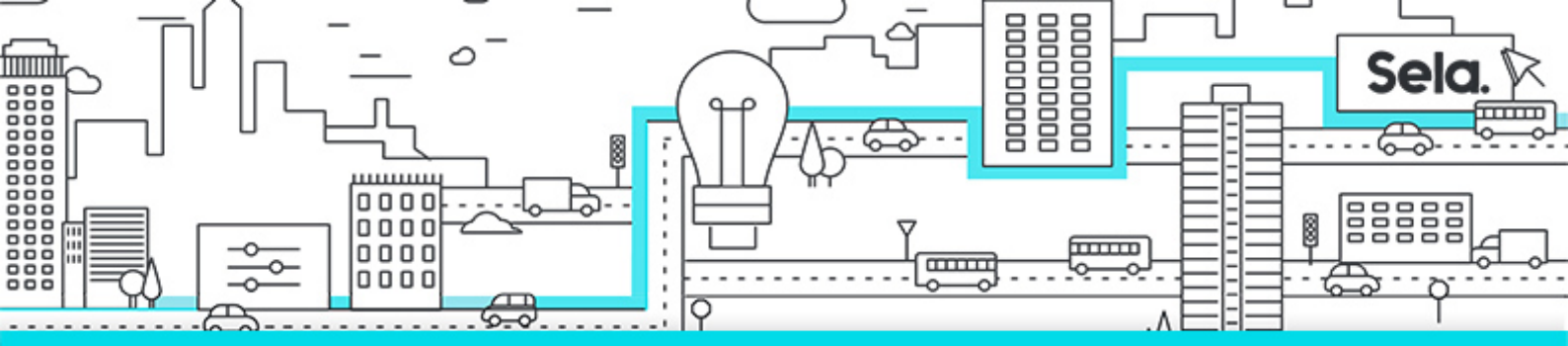
- Definition and structure of JNDI
- Naming and Directory Services
- Context, initial context and JNDI tree
- Binding and looking up objects

• **The Java Message Service – JMS**

- What are messaging systems?
- Models of messaging:
- The structure of messages

• **What is and Why Dependency Injection?**

- What is and Why CDI (JSR 299)?
- CDI theme – Loose coupling with strong typing
- Bean definition (in the context of CDI)



- Basic dependency injection
- Qualifier
- @Named built-in qualifier
- Stateful objects (scoped objects)
- CDI for Java SE application

• **Advance topics in J2EE**

- Dependency injection
- JTA
- Security
- Exceptions
- Notifications
- Interceptors
- Asynchronous call
- Deployment

• **EJB & application server**

- Persist objects in J2EE using JPA
- Session Beans
- Entity Beans
- Message-Driven Beans - MDB
- Advance Topics in EJB3.0
- JTA & other JEE configurations