

# Sela.

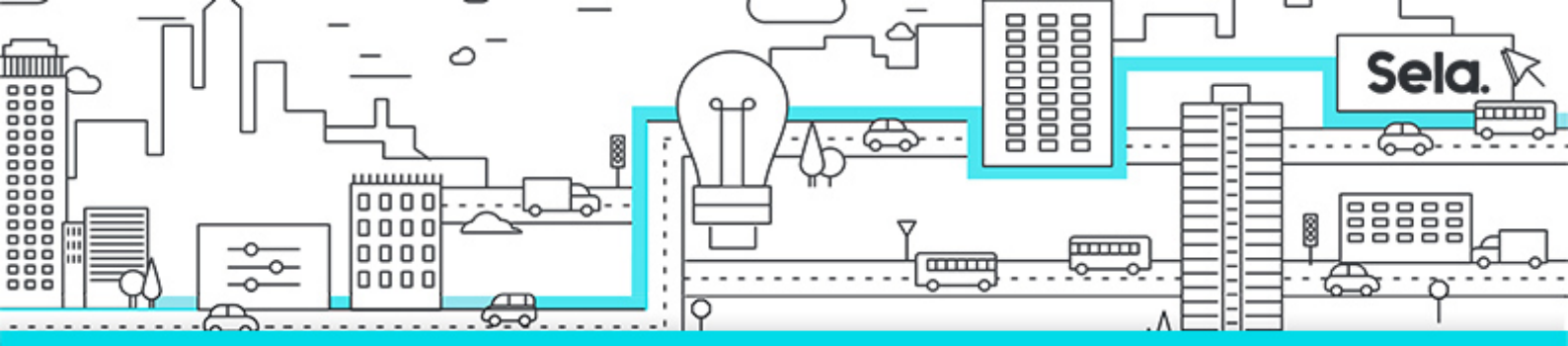
ManagGCApigee

## Managing Google Cloud's Apigee API Platform for Hybrid Cloud

college@sela.co.il

03-6176666





# Managing Google Cloud's Apigee API Platform for Hybrid Cloud

ManagGC Apigee - Version: 1

## 3 days course

### Description:

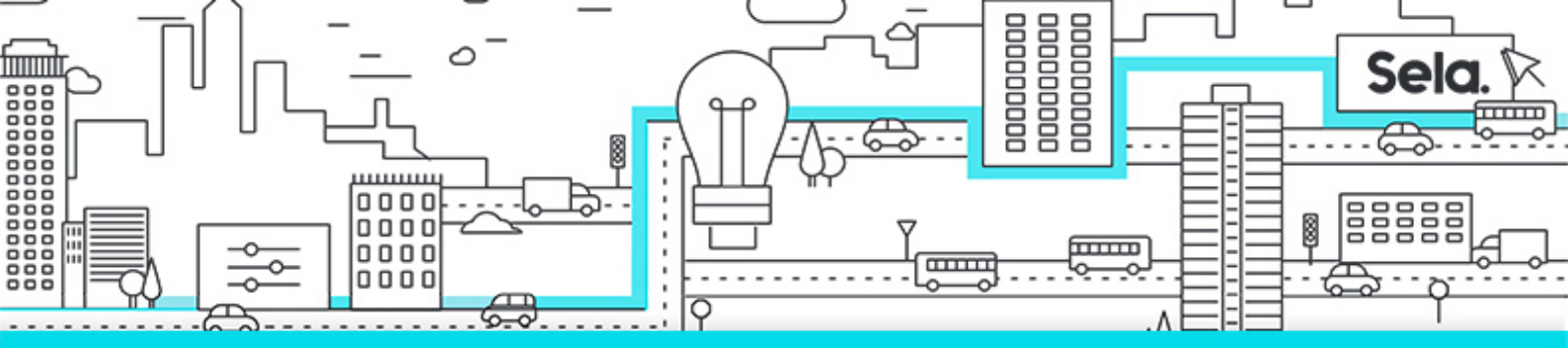
Learn how to install and manage Google Cloud's Apigee API Platform in a hybrid cloud. This course uses lectures, hands-on labs, and supplemental resources to show you how to design, install, manage, and scale your Apigee API Platform.

### Prerequisites:

- Familiarity with Linux command and command line interface.
- Basic understanding of Google Cloud.
- Basic understanding of Anthos and GKE.
- Basic understanding of networking.
- Basic understanding of shell script, XML, JSON, HTTP, REST, and TLS.

### Objectives:

- identify the purpose and value of Apigee API Platform.
- Describe basic concepts and capabilities of Google Cloud, Kubernetes, REST and Anthos.
- Discuss Apigee API Platform architecture and recommended practices for topology design.
- Explain Apigee terminology and logical organizational structures.
- Install Apigee hybrid on Google Kubernetes Engine.
- Discuss infrastructure security, user access management, data storage and encryption practices used in Apigee hybrid.
- Manage environments in Apigee hybrid.
- Discuss capacity planning and scale runtime components in the hybrid runtime



plane.

- Describe the upgrade and rollback process used for the Apigee hybrid installation.
- Troubleshoot and monitor the hybrid runtime plane components using logs, metrics, and analytics.

## Topics:

### • Fundamentals

- Describe the Apigee API management platform, and the services and features it provides.
- Describe basic concepts and the capabilities of Google Cloud, Kubernetes, REST, and Anthos.

### • Architecture

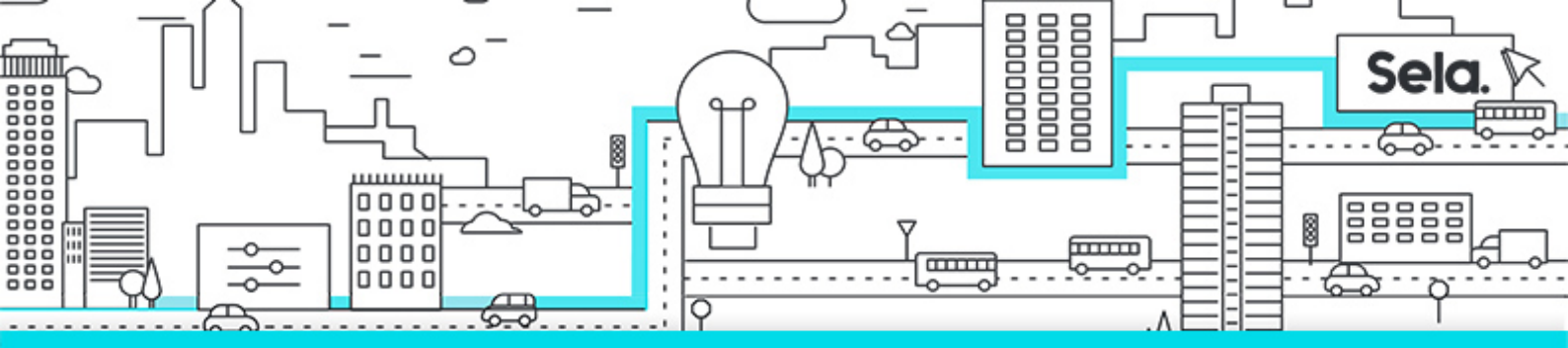
- Describe the architecture and networking used in Apigee hybrid and the various components that are used to operate the runtime plane.
- Describe the terminology, organizational structure, and the management API used in Apigee hybrid.

### • Installation and Platform Operation

- Describe the process involved in installing Apigee hybrid.
- Describe the tools and commands used to configure and manage the components of the hybrid runtime plane.
- Perform an install of the runtime plane on Google Kubernetes Engine.

### • Deployment and Environment Management

- Manage environments and API proxy deployments in Apigee hybrid.
- Add a new environment to your hybrid runtime plane in Google Kubernetes Engine.



- **Security**

- Determine how hybrid runtime components communicate securely within the runtime plane, and with the hybrid management plane in Google Cloud.
- Describe how data is encrypted, and how you can use role-based access control to manage user access in Apigee hybrid.

- **Capacity Planning and Scaling**

- Determine how to plan capacity for the hybrid runtime plane.
- Scale the hybrid runtime components

- **Upgrade**

- Upgrade an Apigee hybrid installation to a new release of the software distribution.
- Discuss rolling updates, and how to roll back an upgraded Apigee hybrid installation to the previous release.

- **Logging and Monitoring**

- Explain how the Apigee runtime plane generates logs, metrics and analytics data.
- Monitor the health of Apigee hybrid runtime plane components, and troubleshoot issues with those components, using logs and metrics data.