

# Sela.

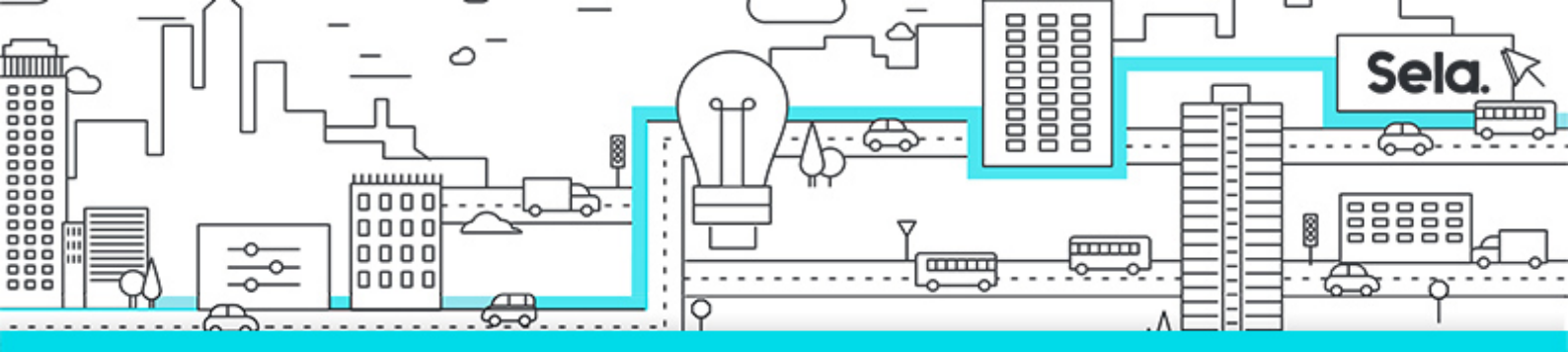
PL900

## Microsoft Power Platform Fundamentals

college@sela.co.il

03-6176666





# Microsoft Power Platform Fundamentals

PL900 - Version: 1

---

## 2 days course

### Description:

Learn the business value and product capabilities of Power Platform. Create simple Power Apps, connect data with Common Data Service, build a Power BI Dashboard, automate a process with Power Automate, and build a chatbot with Power Virtual Agents

### Intended Audience:

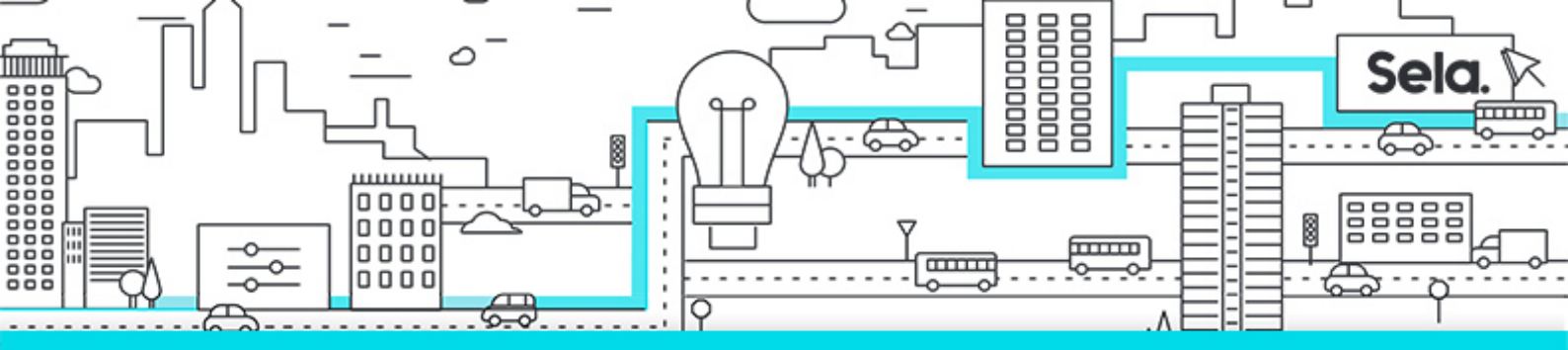
Candidates for this exam are users who aspire to improve productivity by automating business processes, analyzing data to produce business insights, and acting more effectively by creating simple app experiences.

### Prerequisites:

- None

### Objectives:

- Describe the Power Platform components: Power Apps, Power BI and Microsoft Automate
- Describe the Power Platform components: Common Data Service, Connectors and AI builder
- Describe cross-cloud scenarios across M365, Dynamics 365, Microsoft Azure and 3rd party services
- Identify benefits and capabilities of Power Platform
- Identify the basic functionality and business value Power Platform components



- Implement simple solutions with Power Apps, Power Automate, Power BI, and Power Virtual Agents

## Topics:

- **Module 1: Introduction to Power Platform**
  - Power Platform Overview
- **Module 2: Introduction to Common Data Service**
  - Common Data Service Overview
- **Module 3: Get Started with Power Apps**
  - Introduction to Power Apps
  - How to build a canvas app
  - How to build a model-driven app
  - Introduction to Power Apps portals
- **Module 4: Get Started with Power Automate**
  - Power Automate Overview
  - How to Build an Automated Solution
- **Module 5: Get Started with Power BI**
  - Power BI Overview
  - How to Build a Simple Dashboard
- **Module 6: Introduction to Power Virtual Agents**
  - Power Virtual Agents overview
  - How to build a chatbot