

# Sela.

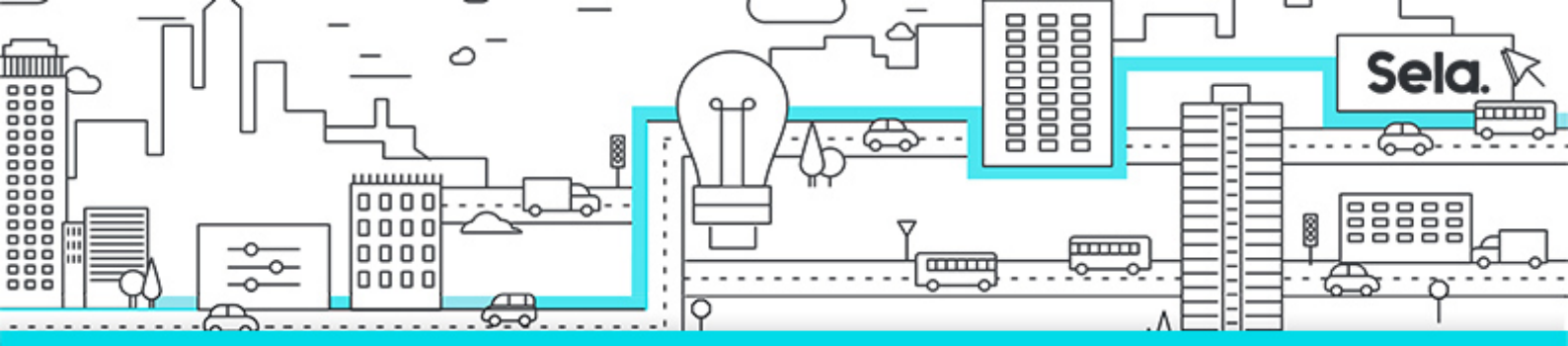
PowerBI\_25011\_1253\_

## Power BI

college@sela.co.il

03-6176666





# Power BI

PowerBI\_25011\_1253\_ - Version: 1

## 10 days course

### Description:

The Power BI course is comprehensive and teaches how to build spectacular interactive reports that will help decision makers in organizations see the full picture and take steps that will improve the company's situation. Students who complete the course will be able to build dynamic reports themselves in an advanced graphic configuration that allows for unique statistical analysis capabilities.

The course was built based on best practice in the implementation of the system based on the lecturer's many years of experience while emphasizing familiarity with the important components for successful assimilation.

### Intended Audience:

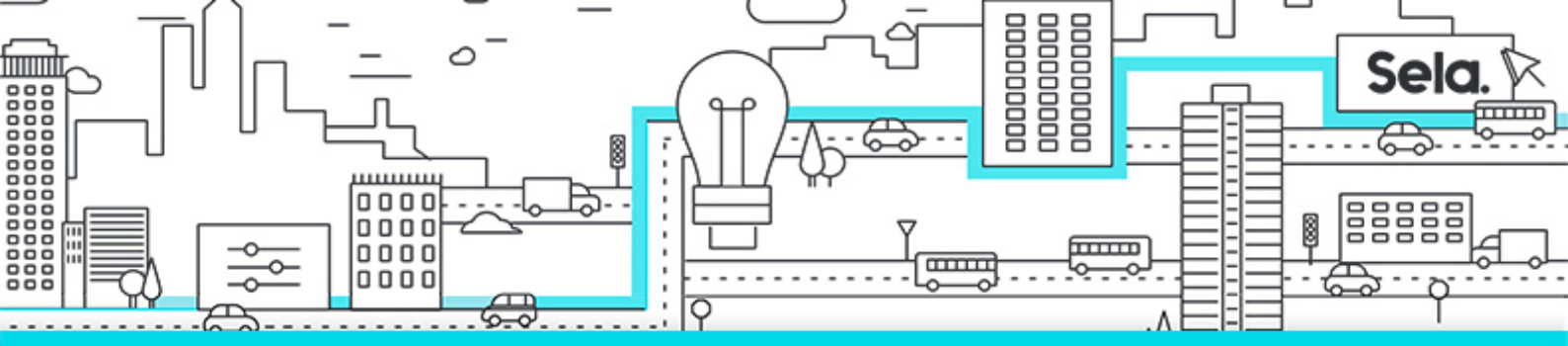
people who wish to learn how to build interactive reports and improve the process of decision making

### Prerequisites:

- Prior knowledge of Excel is preferred

### Objectives:

- A comprehensive Course on how to import, transform & visualize data with Power BI, with practical exercises & case study
- Power BI is quickly becoming the world's most powerful self-service business intelligence platform, and an absolutely essential tool for data professionals and beginners alike. With Power BI you can connect to hundreds of data sources, build complex relational models using simple and intuitive tools, and design stunning, interactive dashboards from scratch



## Topics:

### • **Connect & Transform the Raw Data**

- Intro to the Power BI Query Editor
- Types of Power BI Data Connectors
- Basic Table Transformations
- Text, Number & Date Tools
- Index & Conditional Columns
- Grouping & Aggregating Data
- Pivoting & Unpivoting
- Modifying, Merging & Appending Queries
- Connecting to Folders
- Defining Hierarchies & Categories
- Query Editing & Power BI Best Practices

### • **Add Calculated Fields with DAX**

- Intro to Data Analysis Expressions (DAX)
- Calculated Columns vs. Measures
- Row Context vs. Filter Context in Power BI
- DAX Syntax & Operators
- Common Power BI Functions
- Basic Date & Time Formulas
- Logical & Conditional Statements
- Text, Math & Stats Functions
- Joining Data with RELATED
- CALCULATE, ALL & FILTER Functions
- DAX Iterators (SUMX, AVERAGEX)
- Time Intelligence Formulas
- DAX & Power BI Best Practices